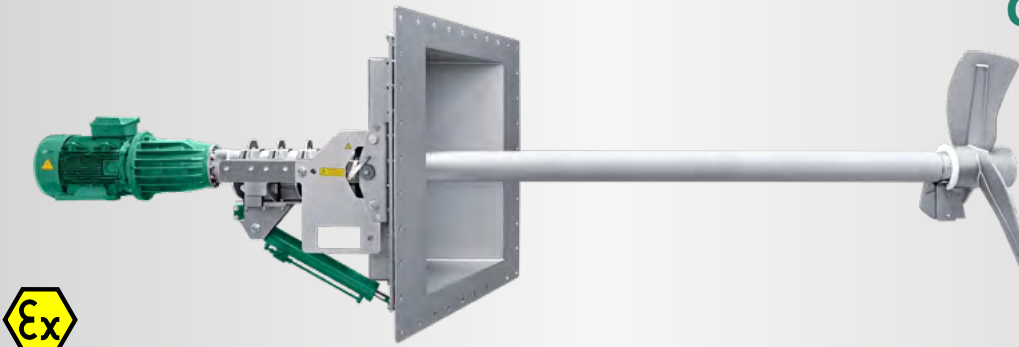


GIANTMIX FTX

FTX 150-135




Application

Dry matter content up to 15 %
Substrate temperature up to 70°C
pH-value 6.5 - 8.5

Technical data

Tube length 4.0 / 5.0 / 5.5 / 6.0 m
Tube Ø 159 x 5 mm, ss304 inclusive robust tube within tube technology
30° sealing plate in ss304 other angles as well as ss316 version on request
Sound pressure level 75 dB(A)
Installation up to 8 m below substrate level, other immersion depths on request
Oil inspection glass for monitoring the tightness
Agitator completely manufactured in modular design
POM protection to minimize abrasion

Motor

Motor power: 15.0 kW, 2-poles
High power factor, IE4
400 V, 50 Hz, 2,965 rpm, special tensions on request
PTC thermistors as overheat protection
Ex-Motor  II 3G Ex nA IIA T3 Gc (ex-zone 2)

Gear

Robust 2-staged planetary gear, 1st stage helical geared, low noise level
Reduction ratio $i = 21.99$
Longlife gear oil Blasias SX 320
Oil change after 12,000 operating hours

Bearing

2 tapered roller bearings to absorb the axial forces
Mechanical seal SiC/SiC, independent of rotation direction
Interim slide bearings for the drive shaft



Propeller

3-blade high efficiency propeller, dynamically balanced
FTX | 15.0 kW | propeller XT 1200-13 | 135 rpm
ss304, optional ss316

Adjustment range

Sealing plate 1,430 x 1,430 mm optional right or left 30° preset, other ranges on request
Vertical inclination through hydraulic cylinder + 5° / - 30°
Tank opening (WxH): 1.1 x 1.1 m

Ex-zone

Ex-Zone 2 (outside tank) and Zone 1 (inside tank)
Classification mechanical components:
  II 2G Ex h IIA T3 Gb

Control box

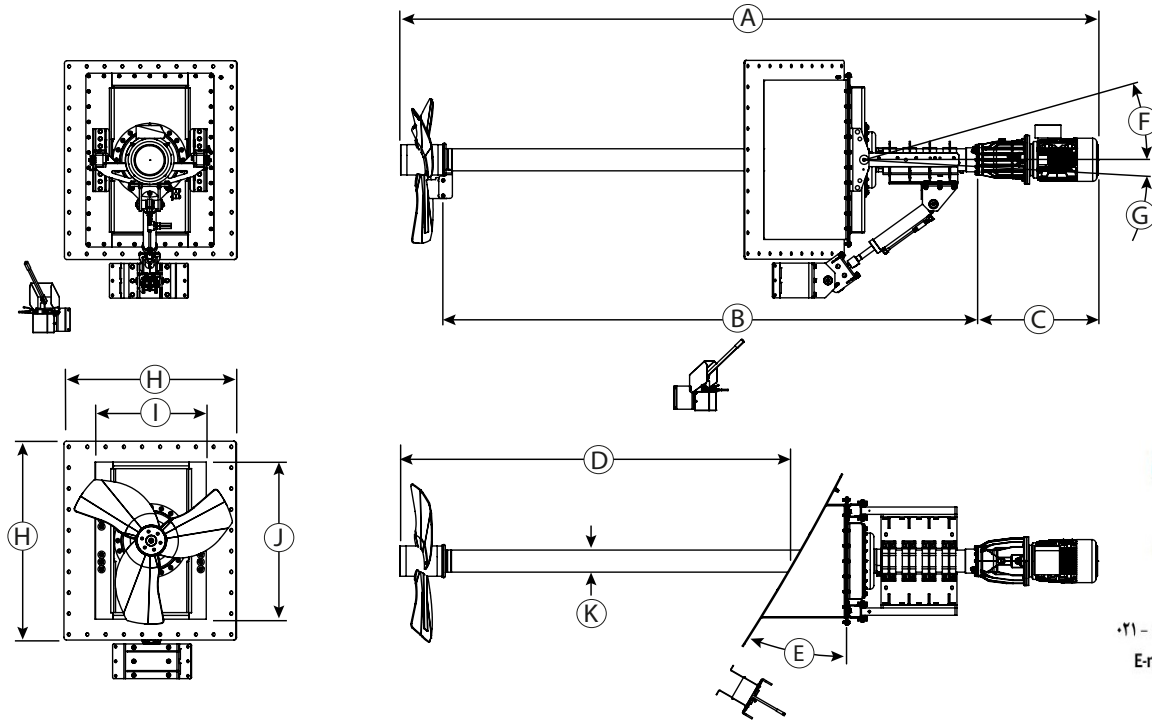
Start/Stop operation via soft start provided by the customer
Optional: frequency converter for speed control and increasing energy efficiency



تلفن تماس : ۸ و ۸۸۳۲۴۹۳۷ - ۰۲۱

E-mail : sales@brp.co.ir

GIANTMIX FTX FTX 150-135



بیسارایزن پارس
نمایندگی ایران

تلفن تماس: ۸ و ۸۸۳۲۴۹۳۷ - ۰۲۱
E-mail: sales@brp.co.ir

Dimensions

Type	A [mm]	B [mm]	C [mm]	D [mm]	E	F	G	H [mm]	I [mm]	J [mm]	K [mm]
FTX 150-135	5,020	4.000	860	2,820	30°	30°	5°	1,430	900	1,100	Ø 159
	-	-		-							
	7,020	6.000		4,820							

Technical data

Type	Rated power [kW]	Rated Voltage [V]	Rated current [A]	Frequency [Hz]	Power factor cos ϕ	Gear reduction ratio	Propeller speed [rpm]	Propeller diameter [mm]	Axial force [kN]	Flow velocity [m/s] *	Pumping rate Water [m ³ /min]	Weight approximate [kg]
FTX 150-135	15.0	400	27.1	50	0.85	22	135	1,200	6.5	3.4	223	1,100

Subject to technical changes
* measured in water and 1.2 m distance

As per: 2023-05