



STEVMIX VX

VX5 150-8

VX7 150-8

VX9 150-8

VX11 150-8



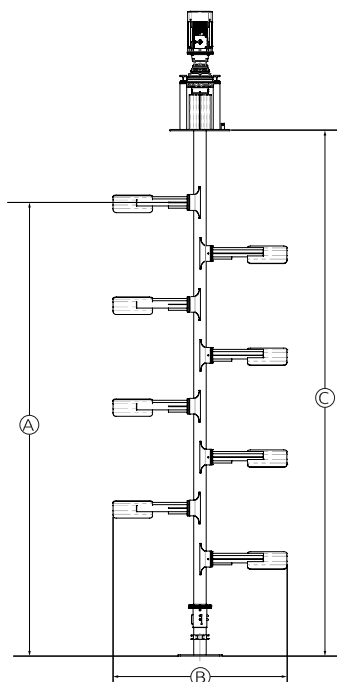
made by STEVERDING

Application

- For constant & fluctuating filling levels
- Dry matter content up to 15 %
- Substrate temperature up to 55°C
- pH value 6.5 - 8.2

Technical data

- Motor power: 15 kW
- Rotational speed: 8 rpm
- 3-staged planetary gear



بیناراین پارس

نماینده گی ایران

تلفن تماس : ۸ و ۸۸۳۲۴۹۳۷ - ۰۲۱

E-mail : sales@brp.co.ir

Dimensions

Type	A [mm]	B [mm]	C [mm]
VX5	5,000	Ø2,750	6,000
VX7	7,000	Ø2,750	8,000
VX9	9,000	Ø2,750	10,000
VX11	11,000	Ø2,750	12,000

* depending on installation height